

Name \_\_\_\_\_

Date \_\_\_\_\_

Test on \_\_\_\_\_

Classroom Teacher \_\_\_\_\_

**Musical Theater- Review Sheet**

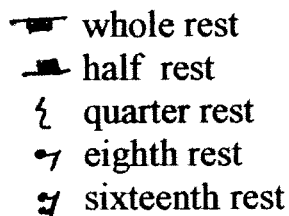
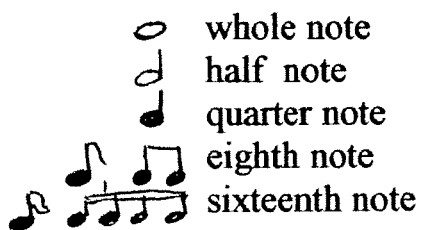
1. Musical Theater - story told through speaking, singing and dancing
2. Producer - Person who is in charge of the business part of a musical
3. Director - Person in charge of the actors and actresses
4. Conductor - Leads the orchestra and singers
5. Composer - Person who writes the music
6. Lyricist - Person who writes the words to the music
7. Choreographer - Person who writes/creates the dances in a musical
8. Actors/Actresses - Men and women who play the parts of the characters in the show.
9. Character - People in the story who are used to tell the story and carry the message.
10. Chorus - large groups of people who sing and dance in the story
11. Lead - main characters, the stars
12. Pit Orchestra - The people play instruments in a small orchestra which is seated in the pit area of the stage.
13. Stage Crew - People in charge of setting up or taking down the scenery, moving it, curtains, moving scenery between scenes, building the sets, lighting, sound and special effects.

Act I - Introduces each character and sets up a problem  
1 2

Act II - Twists and turns, then solves the problem  
1 2

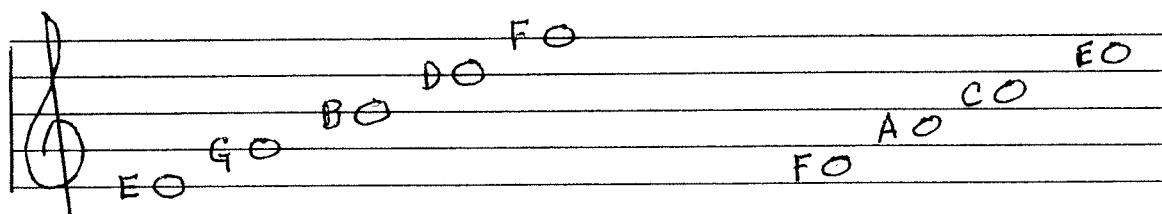
14. Make-up - Cosmetics actors/actresses use to look the part they are playing.
15. Costumes - Clothing actors/actresses wear to look the part they are playing.
16. Props - properties, small carry on objects that are needed to help tell the story.
17. Dialogue - spoken words, conversations between players
18. Script - book of actors/ actresses lines or spoken words
19. Score - Book of music which includes songs and dances
20. Overture - beginning piece of music that introduces musical themes from the musical, played by the orchestra
21. Finale - ending musical piece that includes most of the cast
22. Encore - a piece of music repeated due to good audience response
23. Curtain Call - end of show when actors/actresses receive applause.
24. Scenery - background sets used for each scene
25. Act - large divisions within a play, musical or opera
26. Scene - small divisions within each act. Usually changes with changes in location.
27. Setting - Time and place a story takes place.
28. Publicity - Advertising for a show
29. Royalties - money paid for the legal rights to perform a show
30. Cue - a signal to stop or start an action

You also need to remember your notes rest and basic music symbols:

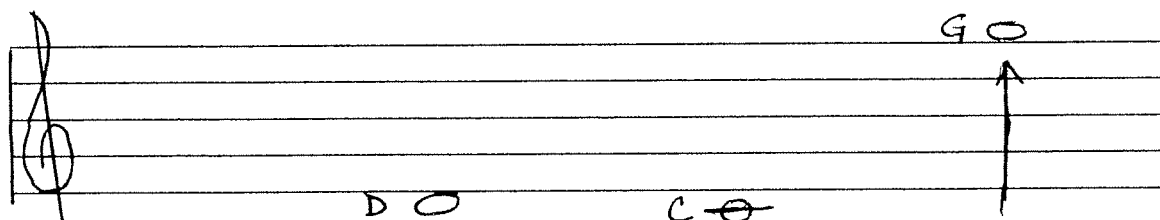


Also you should remember how to name the notes on the G clef

Naming notes on the G clef-



**Lines-** Every Good Boy Does Fine **Spaces spell-** F A C E



**Above and below-** Deep Down in the Dungeon Cats Cry Goodies on the top shelf

Counting:

