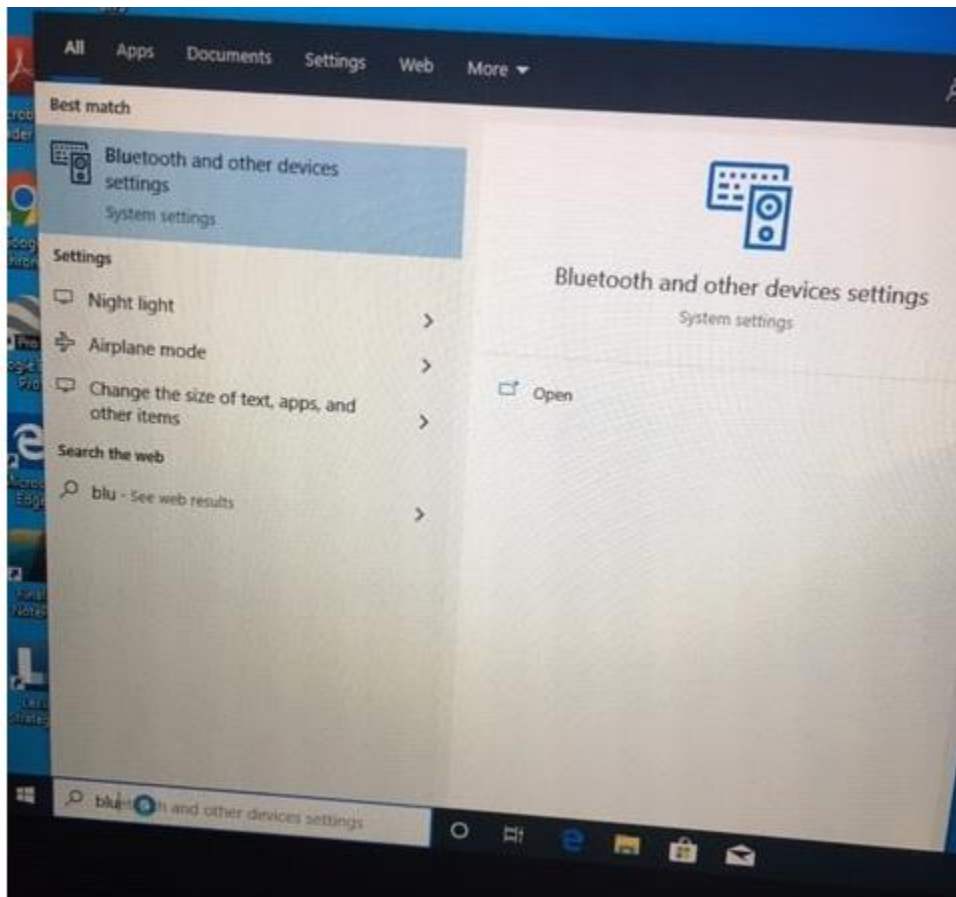


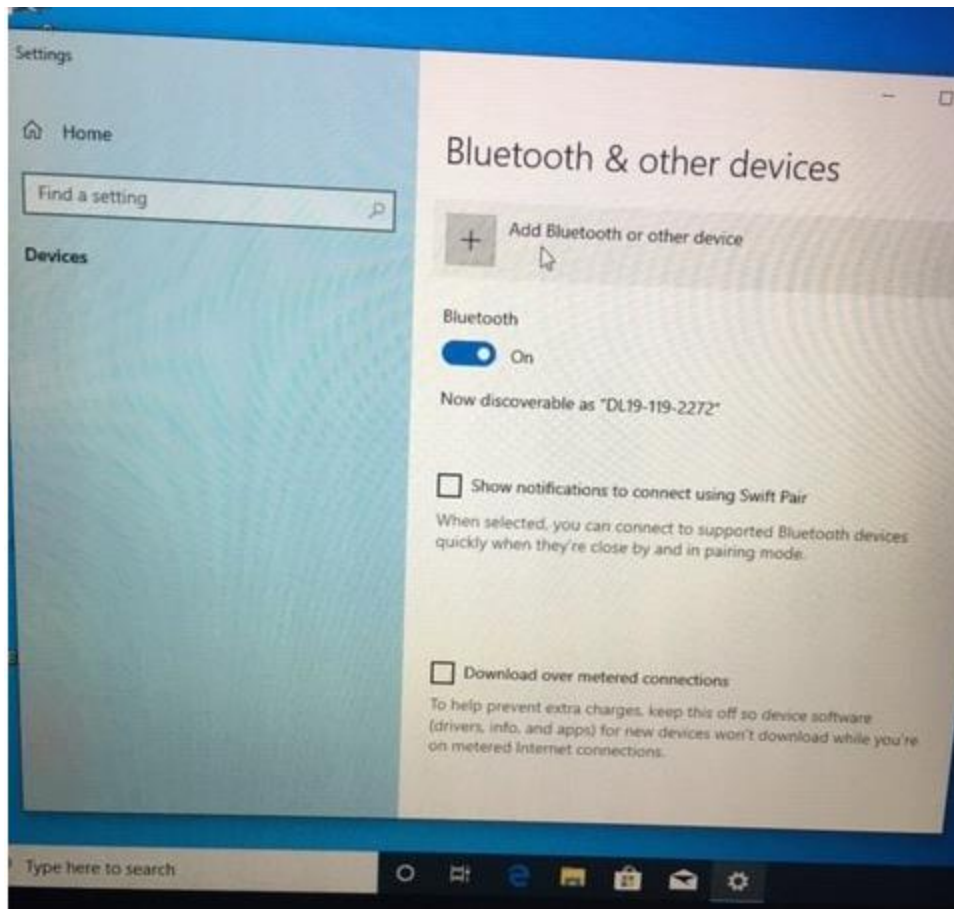
How To connect a Bluetooth Device – Ex: headset, speaker, or other audio device

1. Turn on your Bluetooth audio device and make it discoverable.

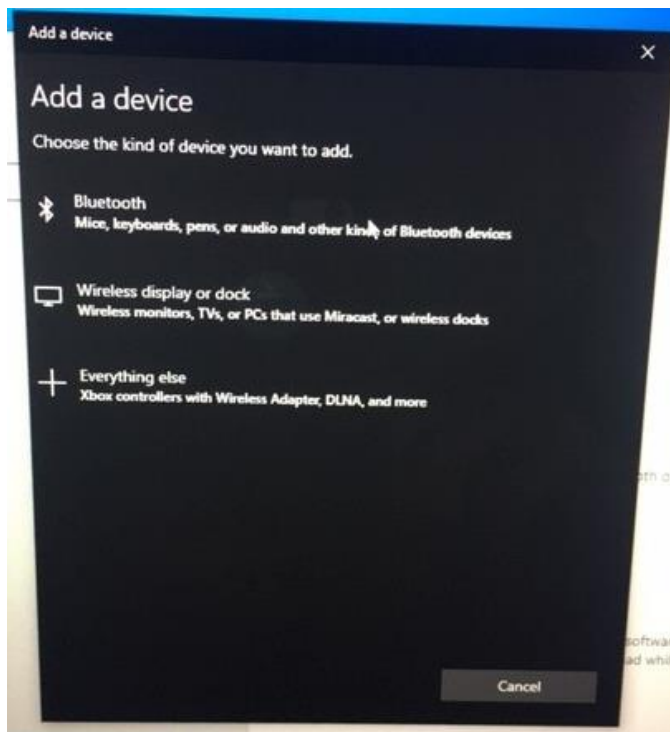
The way you make it discoverable depends on the device. Check the device or visit the manufacturer's website to learn how.

2. Type "Bluetooth and other devices settings" in the search box and click on open

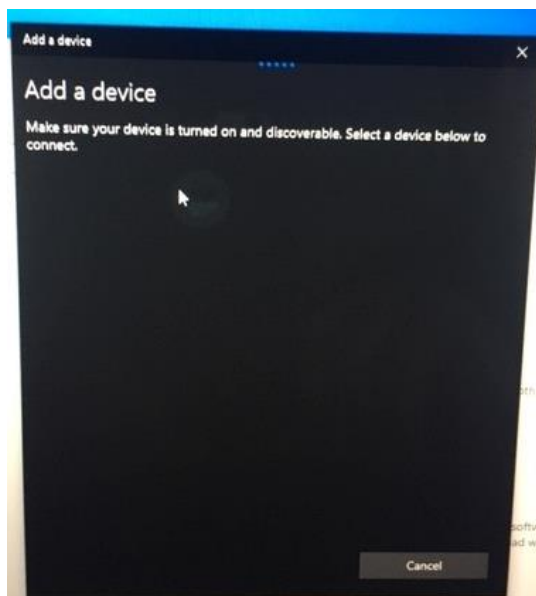




3. Make sure the Bluetooth button is "On" and then click on Add bluetooth or other device



4. Click on Bluetooth



5. If your device shows up here, click on it

After a few seconds your device should appear and will state it is connected